

# 高雄國際機場

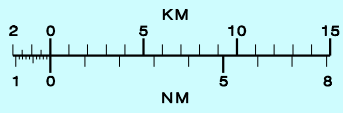
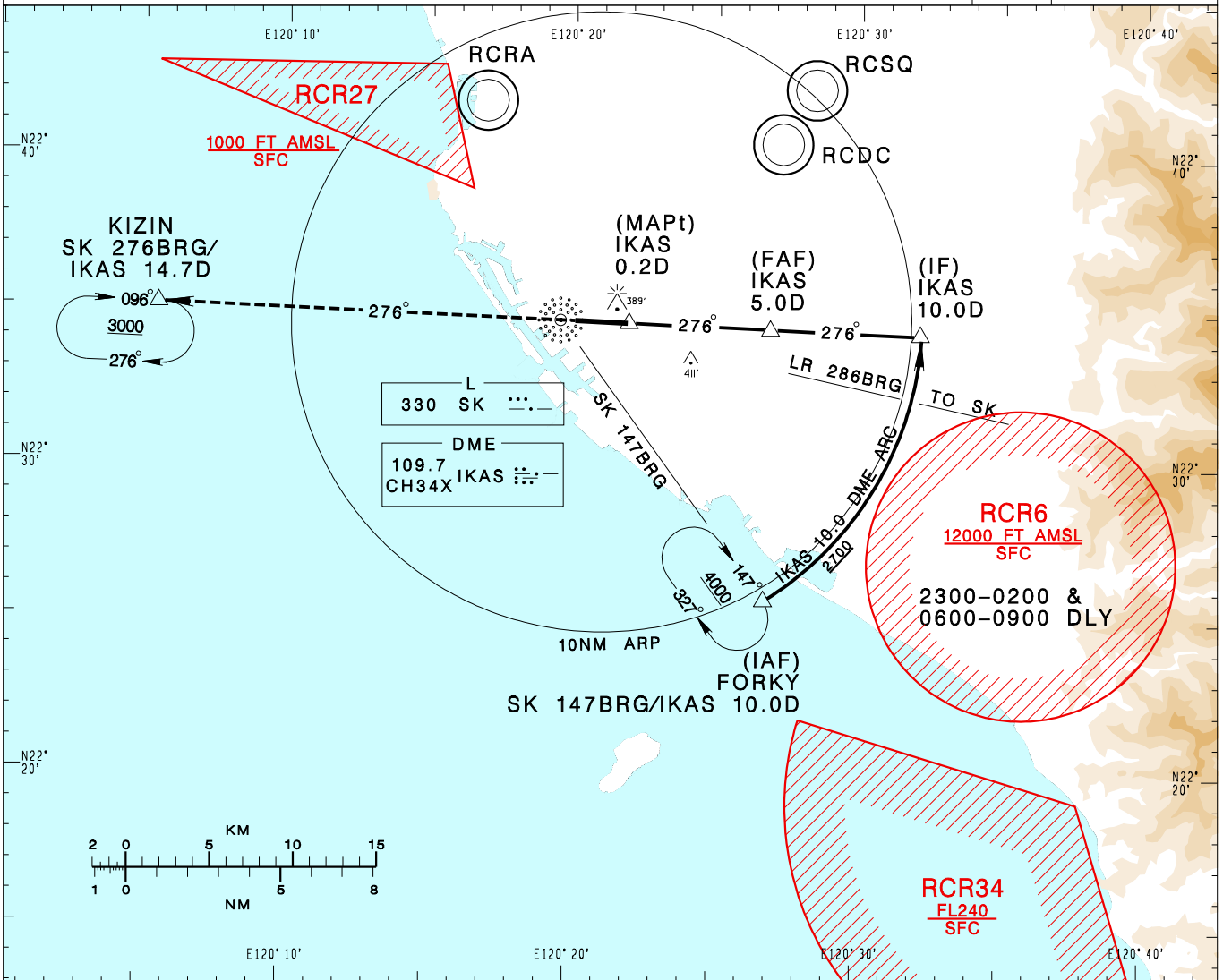
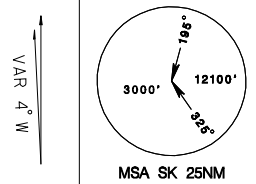
## KAOHSIUNG INTL AD

RCKH  
NDB RWY27

KAOHSIUNG APP 124.7 125.7	KAOHSIUNG TWR 118.7 120.7	ATIS 127.8
------------------------------	------------------------------	---------------

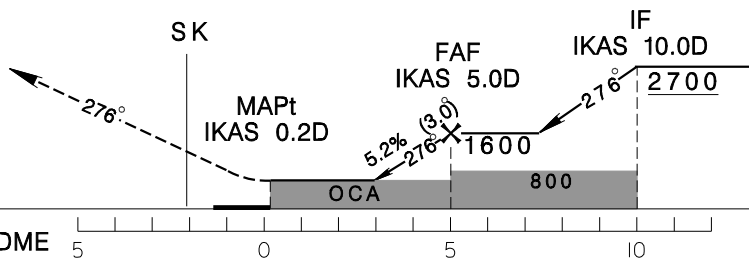
Apt Elev: 32' Rwy27 DTHR Elev: 31' Trans Level: FL130 Trans Alt: 11,000'

BEARINGS ARE MAGNETIC; DISTANCES ARE NAUTICAL MILES; ELEVATIONS, HEIGHTS IN FEET



DIST to IKAS	3DME	4DME	5DME
ADVISORY ALT	980	1300	1600

MISSED APCH:  
CLIMB DIRECT TO SK, THEN  
TRACK SK 276BRG TO KIZIN,  
CLIMB TO 3000 AND HOLD.



MINIMA (OCA IN FT, VIS IN M, OCH IN FT)					NOTE 1. CIRCLING NOT AUTHORIZED. 2. THE INITIAL APCH ARC INFRINGES RCR-6 AREA, PRIOR COORDINATION WITH ROCAF WILL BE COMPLETED BY ATC BEFORE ISSUING CLEARANCE DURING RCR-6 ACTIVE HOURS.  *DME REQUIRED
CATEGORY	A	B	C	D	
STRAIGHT IN	640/1200 RVR1200 608		640/2100 608		
STRAIGHT IN (ALS OUT)	640/1600 608		640/2800 608		

CHANGES: NEW PAGE NUMBER, UPDATE RESTRICTED AREA VERTICAL LIMITS REPRESENTATION